

## Treatment – Why, Whom, When, What drug, How long

E Seeman

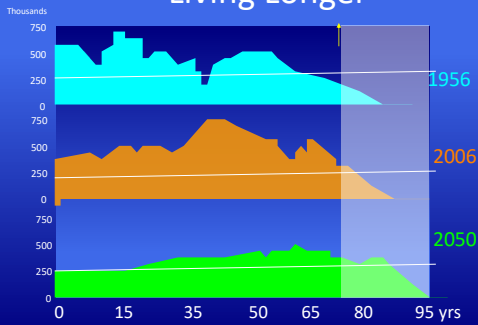
Depts Endocrinology and Medicine  
Austin Health  
University of Melbourne  
Melbourne . Australia

Potential Conflicts of Interest

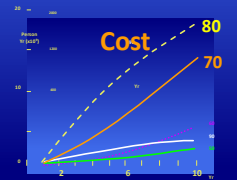
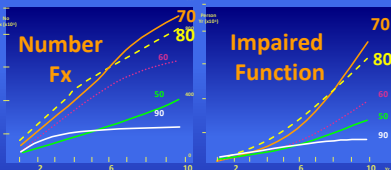
Research support or payment for lectures: Allergan, Eli Lilly. He is a Director of the board and shareholder in StraxCorp.

# Fasting CTX

## Living Longer

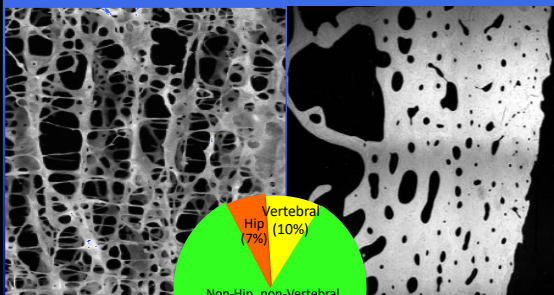


Vaupel Nature 2010; 464: 536-42  
Christensen et al Lancet 2009; 374:1196-208



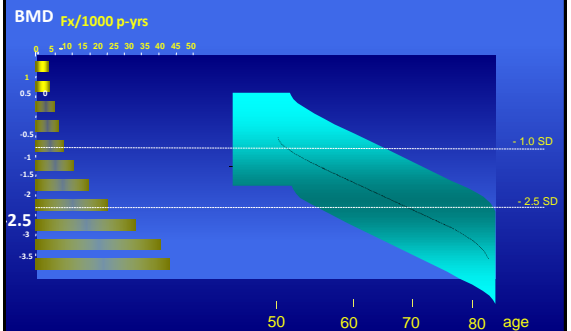
Christakos et al Bone 1994;15:977-86

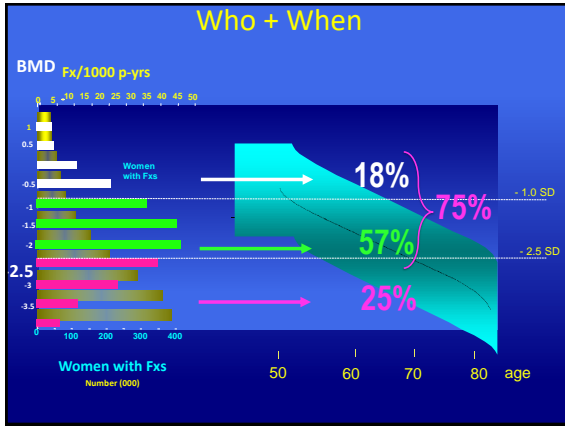
## Why



© Roux Osteop Int, 2012

## Who + When





### Who + When

**Patient**

- Older
- Chronic illness
- Propensity for falls
- Lower body weight
- Frailty
- Patients wishes

**Bone**

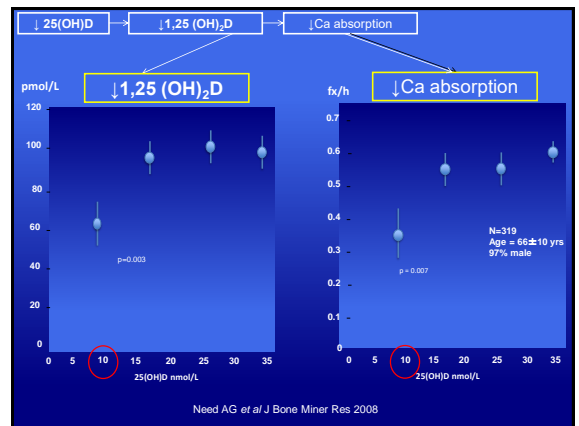
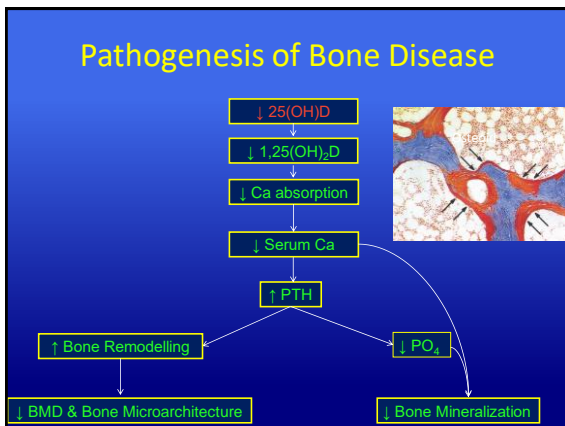
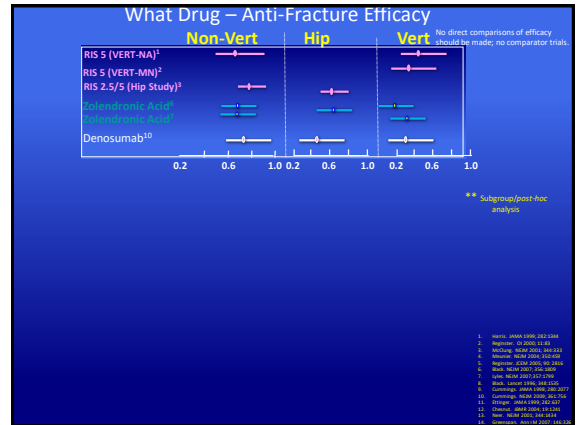
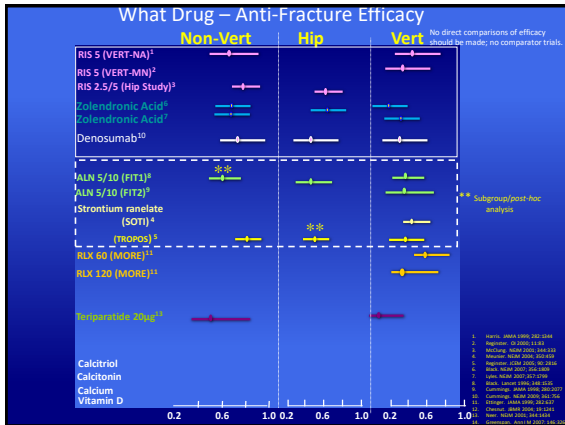
- Presence of fracture
- Low BMD
- High remodelling
- Decayed Microarchitecture (high porosity, trabecular decay)

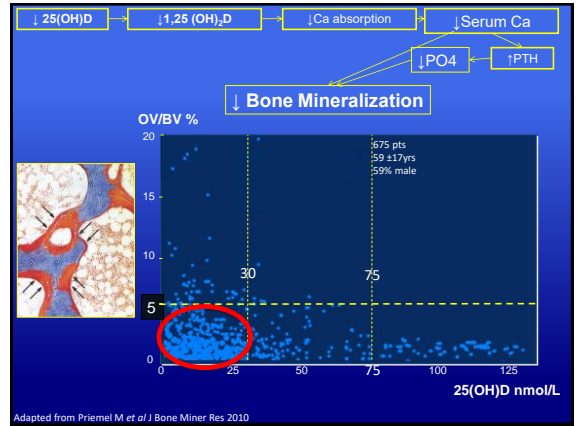
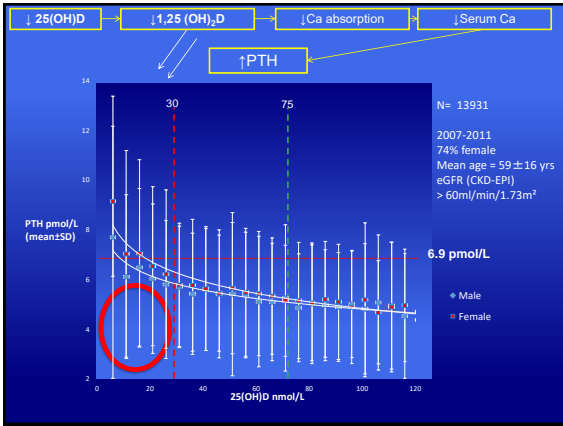
**Drug**

- Efficacy
- Safety
- Convenience

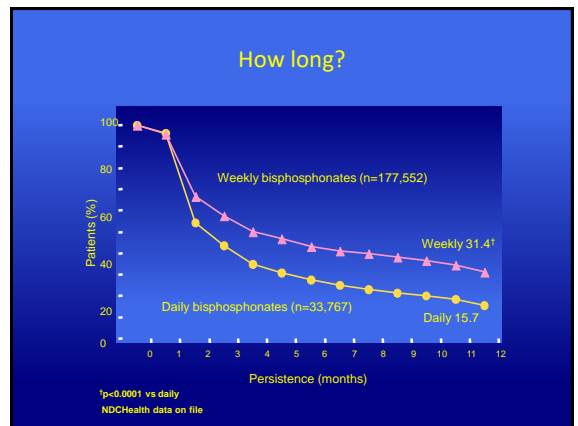
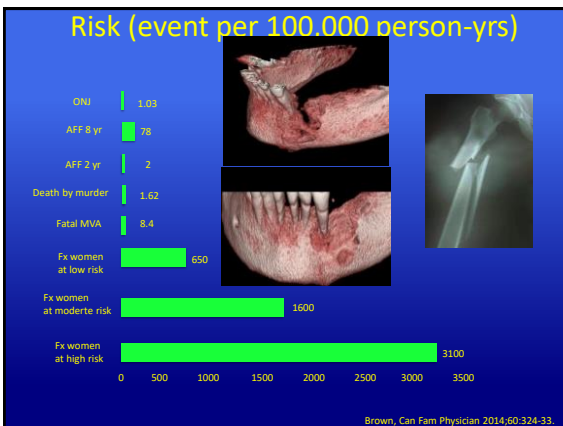
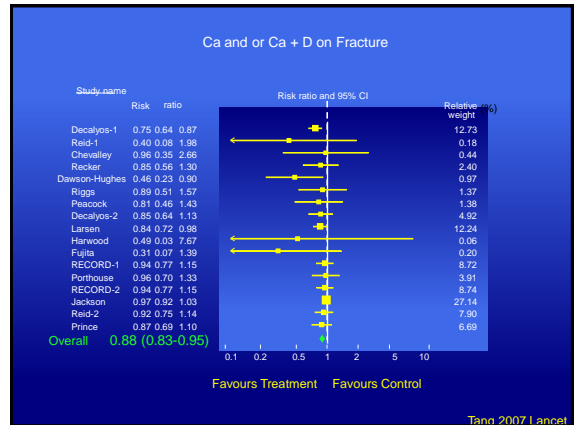
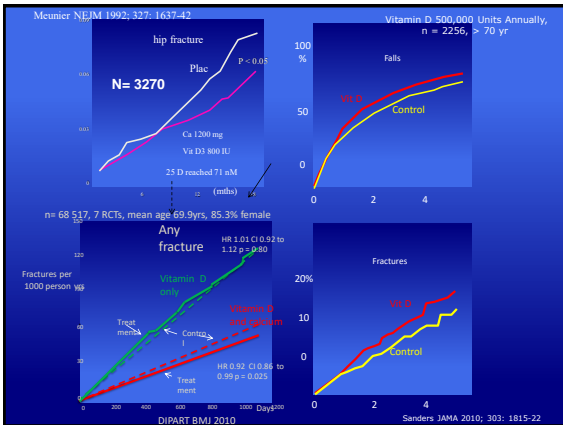
% placebo treated women having a fracture during year 2 and 3 in the Horizon Trial

Black, Seeman Osteo Intern 2011





Adapted from Priemel M et al J Bone Miner Res 2010



## Summary

Why

Fractures

Who & When

*Absolute Risk*

What drug

Evidence

How long

Persisting risk